



AffiAB® GPX8 Rabbit Polyclonal Antibody

Catalogue number: AFG-SBA-00001

Product Name:	GPX8
Alias:	EPLA847; Glutathione peroxidase 8 (putative); Glutathione peroxidase 8; GPX 8; GPx-8; gpx8; GPX8_HUMAN; GSHPx-8; Probable glutathione peroxidase 8; UNQ847.
Organism Species:	Rabbit
Clonality:	Polyclonal
React Species:	Human, Mouse
Applications:	WB=1:500-2000ELISA=1:500-1000IHC-P=1:400-800IHC-F=1:400-800ICC=1:100-500IF=1:100-500 (Paraffin sections need antigen repair) not yet tested in other applications. optimal dilutions/concentrations should be determined by the end user.
Molecular weight:	24kDa
Cellular localization:	The cell membrane
Form:	Lyophilized or Liquid
Concentration:	1mg/ml
immunogen:	KLH conjugated synthetic peptide derived from human GPX8:111-209/209
Lsotype:	IgG
Purification:	affinity purified by Protein A
Storage Buffer:	0.01M TBS(pH7.4) with 1% BSA, 0.03% Proclin300 and 50% Glycerol.
Storage:	Store at -20 °C for one year. Avoid repeated freeze/thaw cycles. The lyophilized antibody is stable at room temperature for at least one month and for greater than a year when kept at -20°C. When reconstituted in sterile pH 7.4 0.01M PBS or diluent of antibody the antibody is stable for at least two weeks at 2-4 °C.
Product Detail:	Glutathione peroxidase (GPx) enzymes are generally selenium-containing tetrameric glycoproteins that help prevent lipid peroxidation of cell membranes. GPx enzymes reduce lipid hydroperoxides to alcohols, and reduce free hydrogen peroxide to water. GPx members are among the few proteins known in higher vertebrates to contain selenocysteine, which occurs at the active site of glutathione peroxidase and is coded by the nonsense (stop) codon TGA. There are eight GPx homologs (GPx-1–8). GPx-8

(glutathione peroxidase 8), also known as GSHPx-8, is a 209 amino acid single-pass membrane protein. The gene encoding GPx-8 maps to human chromosome 5q11.2 and mouse chromosome 13 D2.2.

Subcellular Location:

Membrane.

Similarity:

Belongs to the glutathione peroxidase family.

SWISS:

Q8TED1

Gene ID:

493869

Database links:

[Entrez Gene: 493869](#) Human

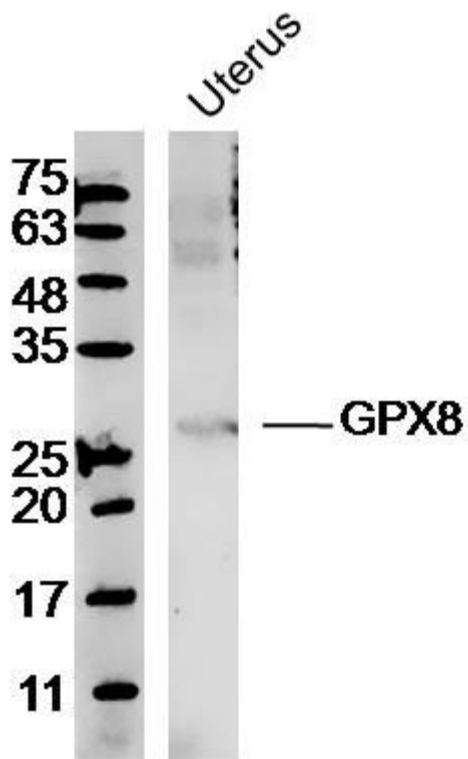
[SwissProt: Q8TED1](#) Human

[Unigene: 289044](#) Human

Important Note:

This product as supplied is intended for research use only, not for use in human, therapeutic or diagnostic applications.

Picture:



Sample: Uterus (Mouse) Lysate at 40 ug

Primary: Anti-GPX8 (AFG-SBA-00001) at 1/300 dilution

Secondary: IRDye800CW Goat Anti-Rabbit IgG at 1/20000 dilution

Predicted band size: 24 kD

Observed band size: 26 kD



AffiGEN Inc.

560 Apple Ln - Baileys Harbor, WI 54202

For ordering and technical support:

Gentaur Molecular Products BVBA

Address: Voortstraat 49, 1910 Kampenhout, Belgium

T: 0032 16 58 90 45 | **E:** info@gentaur.com

Websites: www.gentaur.com | www.maxanim.com