



# Gentaur

## Native Human Secretory Immunoglobulin A (SIgA), Colostrum

<b>Catalog No.</b>	CSI11999A	<b>Quantity:</b>	1 mg
	CSI11999B		5 mg
	CSI11999C		10 mg

**Alternate Names:** Immunoglobulin alpha, SIgA

**Description:** Secretory Immunoglobulin A (SIgA) is the primary immunoglobulin on most mucosal surfaces made of two IgA monomers, a connecting J chain, and the secretory component (SC). The SC protects the secretory IgA complex from proteases present in the mucosal environment. Secretory IgA serves several functions, including neutralization of viruses and exotoxin, enhancement of lactoferrin and lactoperoxidase activities, and inhibition of microbial growth. Because dimeric IgA is able to bind two antigens simultaneously, it is capable of forming large antigen-antibody complexes that neutralizes microbes and facilitates their removal.

**Source:** Human colostrum

**Molecular Weight:** 385 kDa

**Formulation:** 20 mM Sodium phosphate, 150 mM NaCl, pH 7.4

**Purity:** > 95% by SDS-PAGE

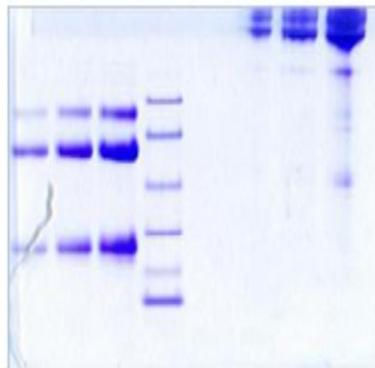
No reaction by IEP with antiserum to human Albumin, IgD, IgE, IgG, IgM and Lactoferrin

**Extinction Coefficient:**  $E^{0.1\%}_{280\text{nm}} = 1.26$

**Storage & Stability:** Store as supplied at -20°C to -80°C for up to 1 year.

**Infectious Disease Statement:** Prepared from human colostrum shown to be non reactive for HBsAg, anti-HCV, anti-HBc, and negative for anti-HIV 1 & 2 by FDA-required tests.

SDS-PAGE  
Reduced and non-reduced



NOT FOR HUMAN USE. FOR RESEARCH ONLY. NOT FOR DIAGNOSTIC OR THERAPEUTIC USE.

**Gentaur Molecular Products BVBA**

**Address:** Voortstraat 49, 1910 Kampenhout, Belgium

**T:** 0032 16 58 90 45 | **E:** info@gentaur.com

**Websites:** www.gentaur.com | www.maxanim.com