



**MAA946Ge21**

**Monoclonal Antibody to Amyloid Beta Peptide 1-42 (Ab1-42)**

**Organism Species: *Pan-species (General)***

***Instruction manual***

FOR RESEARCH USE ONLY

NOT FOR USE IN CLINICAL DIAGNOSTIC PROCEDURES

---

13th Edition (Revised in Aug, 2023)

**Gentaur Molecular Products BVBA**

**Address:** Voortstraat 49, 1910 Kampenhout, Belgium

**T:** 0032 16 58 90 45 | **E:** [info@gentaur.com](mailto:info@gentaur.com)

**Websites:** [www.gentaur.com](http://www.gentaur.com) | [www.maxanim.com](http://www.maxanim.com)

## **[ PROPERTIES ]**

**Source:** Monoclonal antibody preparation

**Host:** Mouse

**Antibody isotype:** IgG2b Kappa

**Purification:** Protein A + Protein G affinity chromatography

**Clone number:** C4

**Traits:** Liquid

**Concentration:** 1mg/ml

**UOM:** 100µl

**Cross Reactivity:** N/A

**Applications:** WB; IHC; ICC; IP.

## **[ IMMUNOGEN ]**

**Immunogen:** Synthetic Peptide, Ab1-42 conjugated to OVA. Target peptide sequence: SNKGAIIGLMVGGVVIA.

**Accession No.:** CPA946Ge21

## **[ APPLICATIONS ]**

Western blotting: 0.5-5µg/mL;

Immunohistochemistry: 5-30µg/mL;

Immunocytochemistry: 5-30µg/mL;

Optimal working dilutions must be determined by end user.

## **[ FORMULATION ]**

**Form & Buffer:** Supplied as solution form in PBS, pH7.4, containing 0.02% NaN<sub>3</sub>, 50% glycerol.

## **[ STORAGE AND STABILITY ]**

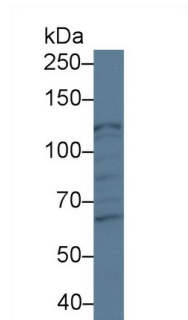
**Storage:** Avoid repeated freeze/thaw cycles.

Store at 4°C for frequent use.

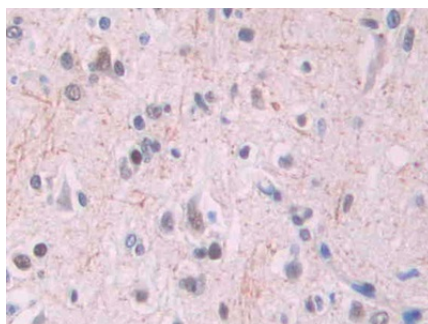
Aliquot and store at -20°C for 24 months.

**Stability Test:** The thermal stability is described by the loss rate. The loss rate was determined by accelerated thermal degradation test, that is, incubate the protein at 37°C for 48h, and no obvious degradation and precipitation were observed. The loss rate is less than 5% within the expiration date under appropriate storage condition.

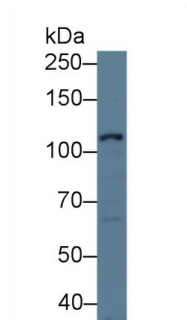
### [ IDENTIFICATION ]



Western Blot; Sample: Human HeLa cell lysate.



DAB staining on IHC-P; Samples: Human Cerebrum Tissue; Primary Ab: 30µg/ml Mouse Anti-Human Ab1-42 Antibody Second Ab: 2µg/mL HRP-Linked Caprine Anti-Mouse IgG Polyclonal Antibody (Catalog: SAA544Mu19)



Western Blot; Sample: Human 293T cell lysate;

Primary Ab: 5µg/ml Mouse Anti-Multi-species Ab1-42 Antibody  
Second Ab: 0.2µg/mL HRP-Linked Caprine Anti-Mouse IgG Polyclonal Antibody (Catalog: SAA544Mu19)

### [ IMPORTANT NOTE ]

The kit is designed for research use only, we will not be responsible for any issue if the kit was used in clinical diagnostic or any other procedures.