

Anti - p38- α (MAPK14) – rabbit clonal antibody

Cat. #: DB 161-0.05 (50 μ l)
DB 161-0.1 (100 μ l)

Clone number: E17-S

Uniprot: Human: Q16539; Mouse: P47811; Rat: P70618

Product description: Rabbit anti-p38- α immunoaffinity purified clonal IgGs

Immunogen: Peptide derived from the C-terminus of human p38- α sequence

Species Reactivity: Human, mouse, rat - tested

Basic information: Major clone of IgGs obtained from immunoaffinity purified immunoglobulins corresponding to immunogenic peptide

Buffer: 20 mM Tris-HCl, pH 8.0

Stabilizer: 10 mg/ml BSA

Preservative: 0.05% Sodium Azide

Storage: 10 μ l aliquots at -20 °C.

Handling: Avoid repeated freezing and thawing

Expiration: 24 months (from the date of delivery)

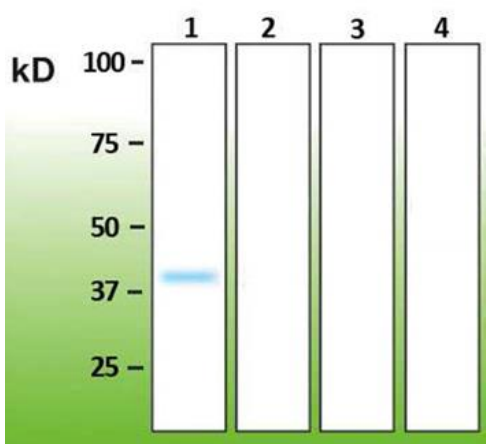
Applications: Western blot, Immunoprecipitation, ELISA, [Immunocytochemistry \(ICC\)](#)

Dilution range: **Western blotting – 1:5,000. ELISA – 1:20,000-1:40,000. Immunoprecipitation, immunohistochemistry – to be tested by user.**

Western immunoblotting solutions:

- Wash buffer: 1x Tris Buffered Saline (TBS); 0.1% Triton X-100
- Blocking buffer: 1xTBS; 0.1% Triton X-100; 5% nonfat dry milk

For western blots, incubate the membrane with antibody diluted in blocking buffer for 2 hours at room temperature.



Anti - p38- α (DB 161)

Western blot analysis of p38- α . Lane A – human recombinant p38- α (260-360a.a., N-terminal GST tag; Novus Biologicals, cat. #: H00001432-Q01), lane B – human recombinant p38- β (with C-terminal DDK tag, Novus Biologicals, cat. #: NBL1-12870), lane C - human recombinant PKC- γ (1-368a.a., N-terminal GST tag, Novus Biologicals, cat. #: H00006300-P01), lane D – human recombinant p38- δ (1-366a.a., N-terminal GST tag, Novus Biologicals, cat. #: H00005603-P01). 500ng of recombinant protein was loaded in each well.